

DTR Medical[®]
LLETZlearn[®] Training Simulator



The Design Checklist

- ✓ Unique Training Simulator for practical training
- ✓ Can be used with electro-surgical tools to imitate real life treatment
- ✓ Features an intuitive assembly that is easy to clean
- ✓ Available to use with any type of Return Electrode Pad
- ✓ Awarded the MediWales “Partnership with the NHS Award”
- ✓ Extremely beneficial as a training tool when used with our Cervical Rotating Biopsy Punch to practice taking a high-quality sample; as well as Colposcopy Coloured Loops and Ball electrodes for LLETZ procedures
- ✓ UK manufactured
- ✓ Reusable

DTR Medical[®]

LLETZlearn[®] Training Simulator

Intended Use

The reusable LLETZlearn[®] Training Simulator has been designed in conjunction with LLETZlearn[®], to provide excellence in Colposcopy training.

It enables trainees to gain confidence before working on a patient, improving skills, and eliminating the risk to patients in Colposcopy treatment.

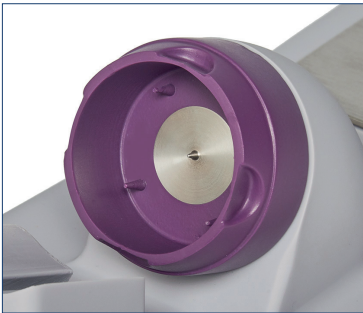
It is a reusable device that can be used more than once.

Instructions For Use (IFU)

Instructions for use available upon request.

Quality Management System Control

Manufactured under EN ISO 13485 Certified QMS.



DTR Medical[®] LLETZlearn[®] Training Simulator

Product Specification

Code	Description	Pack Size	Box Size
LTZ011	LLETZlearn [®] Training Simulator	N/A	1 Unit

Material Breakdown

Product Component	Details
Base	Resin SG95
Clip in Feature	Resin SG95
Tube Body	Resin SG95
Elastomeric Interface	Elastomer
Grounding Plate	Stainless Steel
Connector Cable	N/A
Washer	Stainless Steel