

Summit Medical™

Ventilation Tubes



KEY PRODUCT FEATURES

- ✓ Effective in the management of Eustachian tube dysfunction, chronic otitis media with effusion and recurrent acute otitis media
- ✓ Single-use
- ✓ Sterile
- ✓ Box of 10

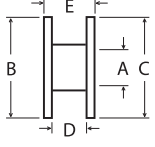
Material Breakdown	
Material	Description
Fluoroplastic Blue or White	Inert, biocompatible and very smooth. The rigid material facilitates tube insertion and its nonstick characteristics may reduce adhesion formation and/or clogging. Summit Medical uses only 100% certified virgin material.
Silicone Elastomer Blue	Extremely soft, compliant and elastic material. It is easily manipulated, extremely lubricious, and allows vent tubes to be easily compressed for insertion or removal. Summit Medical uses 100% certified medical grade silicone resin.
Titanium E	One-half the weight of stainless steel with many of the same features and benefits. It has excellent biocompatibility, is extremely resistant to corrosion and attack by body fluids, its rigidity facilitates insertion and it is extremely durable. Summit Medical uses 100% certified ASTM F136-92 titanium.
MRI Information The titanium vent tube and stainless steel wire have been determined to be MR-conditional according to the terminology specified in the American Society for Testing and Materials (ASTM) International, Designation: F2503-05. A patient with this device can be scanned safely immediately after placement under the following conditions: <ul style="list-style-type: none"> • Static magnetic field of 3 Tesla or less • Maximum spatial gradient magnetic field of 720-Gauss/cm or less Additional information can be obtained by contacting Summit Medical at 651-789-3939 or 1-888-229-2875.	

Summit Medical™

Ventilation Tubes

KEY

Measurements are listed in millimeters. All ventilation tube dimensions are approximate and subject to manufacturing variances.

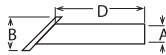
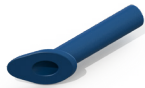
 <p>Example</p>	A	B	C	D	E
	Inner Diameter	Inner Flange Diameter	Outer Flange Diameter	Inner Flange Distance	Total Length

Ventilation Tubes

10/box

Armstrong Beveled Straight Shank

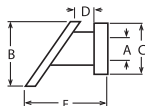
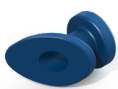
The angle of the beveled inner flange corresponds to the angle of the tympanic membrane for easier insertion, resistance to premature extrusion, and visibility through the lumen.



Code	Feature	Material	Inner Diameter (A)	Inner Flange Diameter (B)	Outer Flange Diameter (C)	Inner Flange Distance (D)	Total Length (E)
VT-0500-01	--	Silicone	1.14	2.6	-	7.0	-
VT-0501-01	--	Fluoroplastic Blue	1.14	2.6	-	7.5	-

Armstrong Grommet

Beveled inner flange corresponds to the angle of the tympanic membrane for easier insertion, extrusion resistance, and visibility through the lumen. Outer flange adds security.



Code	Feature	Material	Inner Diameter (A)	Inner Flange Diameter (B)	Outer Flange Diameter (C)	Inner Flange Distance (D)	Total Length (E)
VT-0503-01	--	Fluoroplastic Blue	1.14	2.5	2.4	1.0	4.0

Summit Medical™

Ventilation Tubes

Modified Armstrong Grommet

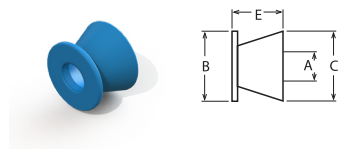
Modified angle facilitates insertion into the myringotomy.



Code	Feature	Material	Inner Diameter (A)	Inner Flange Diameter (B)	Outer Flange Diameter (C)	Inner Flange Distance (D)	Total Length (E)
VT-0508-01	--	Fluoroplastic Blue	1.14	3.07	2.59	1.29	3.07

Baxter Bevel Button

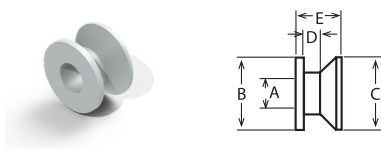
The beveled shape resists occlusion and clears easily. It permits improved visibility through the lumen. The smaller models are especially useful for small ear canal or pediatric applications.



Code	Feature	Material	Inner Diameter (A)	Inner Flange Diameter (B)	Outer Flange Diameter (C)	Inner Flange Distance (D)	Total Length (E)
VT-0602-01	--	Fluoroplastic White	1.27	3.0	3.0	-	2.2
VT-0606-01	--	Silicone	1.27	2.62	1.27	-	2.08

Bevel Bobbin

Combining the best features of the Baxter Bevel Button and the Reuter Bobbin, the beveled shape resists occlusion and clears easily.



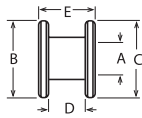
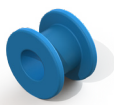
Code	Feature	Material	Inner Diameter (A)	Inner Flange Diameter (B)	Outer Flange Diameter (C)	Inner Flange Distance (D)	Total Length (E)
VT-0608-01	--	Fluoroplastic White	1.14	2.79	2.79	0.66	1.75

Summit Medical™

Ventilation Tubes

Collar Button (Sheehy Style)

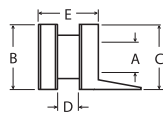
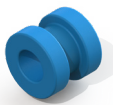
Available in fluoroplastic or silicone, with or without wire and two inner lumen diameters. These large inner diameter models offer increased drainage and ventilation. Similar to Reuter Bobbin without holes.



Code	Feature	Material	Inner Diameter (A)	Inner Flange Diameter (B)	Outer Flange Diameter (C)	Inner Flange Distance (D)	Total Length (E)
VT-1001-01	--	Fluoroplastic White	1.27	2.9	2.9	1.4	2.1
VT-1002-01	--	Silicone	1.27	2.84	2.84	1.43	2.0

Donaldson

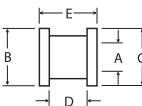
The large lumen offers good ventilation and the dual flange design resists migration and extrusion. Available with a tab for insertion and removal convenience.



Code	Feature	Material	Inner Diameter (A)	Inner Flange Diameter (B)	Outer Flange Diameter (C)	Inner Flange Distance (D)	Total Length (E)
VT-0100-01	--	Silicone	1.14	2.4	2.4	0.8	2.2
VT-0101-01	w/tab	Fluoroplastic White	1.27	2.9	2.9	1.4	2.1
VT-0102-01	--	Fluoroplastic White	1.14	2.84	2.84	1.43	2.0

Mini-Grommet

Dimensioned for pediatric, small ear canal, and tortuous ear canal applications. Mini-Grommet tubes are precision-machined from lightweight, certified titanium.



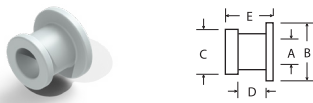
Code	Feature	Material	Inner Diameter (A)	Inner Flange Diameter (B)	Outer Flange Diameter (C)	Inner Flange Distance (D)	Total Length (E)
VT-1425-01	--	Titanium	0.76	1.5	1.5	1.0	1.5

Summit Medical™

Ventilation Tubes

Mini-Tef

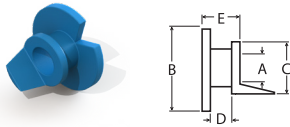
Dimensioned for pediatric, small ear canal, and tortuous ear canal applications. Mini-Tef tubes are constructed of white fluoroplastic and feature a larger diameter inner flange.



Code	Feature	Material	Inner Diameter (A)	Inner Flange Diameter (B)	Outer Flange Diameter (C)	Inner Flange Distance (D)	Total Length (E)
VT-1602-01	--	Fluoroplastic White	0.86	2.0	1.6	1.0	1.5

Paparella

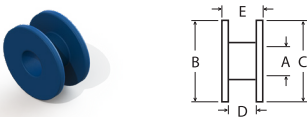
Available in two inner lumen and flange sizes (Types I and II), the notched inner flange is designed for a "twist-in" insertion in a smaller incision.



Code	Feature	Material	Inner Diameter (A)	Inner Flange Diameter (B)	Outer Flange Diameter (C)	Inner Flange Distance (D)	Total Length (E)
VT-0300-01	Type I	Silicone	1.14	2.4	2.1	1.1	2.2
VT-0301-01	Type II	Silicone	1.42	4.4	2.7	1.1	2.2

Reuter Bobbin without Holes

The larger flange diameters encourage longer-term retention. The short flange model is designed to pass through smaller speculums. Available in three lumen diameters. Design is similar to Collar Button design.



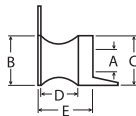
Code	Feature	Material	Inner Diameter (A)	Inner Flange Diameter (B)	Outer Flange Diameter (C)	Inner Flange Distance (D)	Total Length (E)
VT-1203-01	--	Fluoroplastic White	1.00	2.8	2.8	1.0	1.5
VT-1204-01	--	Fluoroplastic White	1.12	2.8	2.8	1.0	1.5
VT-1231-01	--	Titanium	1.14	2.8	2.8	1.0	1.4
VT-1232-01	--	Titanium	1.27	2.8	2.8	1.0	1.4

Summit Medical™

Ventilation Tubes

Shah

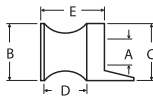
The tab on the outer flange facilitates insertion and better resists extrusion.



Code	Feature	Material	Inner Diameter (A)	Inner Flange Diameter (B)	Outer Flange Diameter (C)	Inner Flange Distance (D)	Total Length (E)
VT-0802-01	w/tab	Fluoroplastic White	1.14	2.4	2.4	-	2.5
VT-0803-01	w/wire	Fluoroplastic White	1.14	2.4	2.4	-	2.5

Shepard

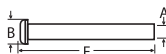
Ease of insertion with forceps or a tube inserter have led to this design's popularity. Available in silicone with a tab or in fluoroplastic with and without wire.



Code	Feature	Material	Inner Diameter (A)	Inner Flange Diameter (B)	Outer Flange Diameter (C)	Inner Flange Distance (D)	Total Length (E)
VT-0200-01	w/tab	Silicone	1.12	2.4	2.4	1.6	2.4
VT-0201-01	w/wire	Fluoroplastic White	1.14	2.4	2.4	1.6	2.4
VT-0202-01	--	Fluoroplastic White	1.14	2.4	2.4	1.6	2.4
VT-0203-01	w/wire	Fluoroplastic White	1.00	2.4	2.4	1.6	2.4
VT-0204-01	--	Fluoroplastic White	1.00	2.4	2.4	1.6	2.4

Straight Shank

Smaller inner flange facilitates insertion in a smaller incision. May be cut to length. Longer shaft lengths may help resist water migration into the middle ear.



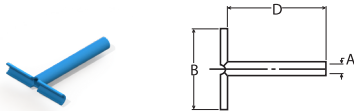
Code	Feature	Material	Inner Diameter (A)	Inner Flange Diameter (B)	Outer Flange Diameter (C)	Inner Flange Distance (D)	Total Length (E)
VT-0901-01	--	Fluoroplastic White	1.14	2.2	-	-	7.0
VT-0903-01	--	Fluoroplastic White	0.89	2.2	-	-	7.0

Summit Medical™

Ventilation Tubes

T-Tube

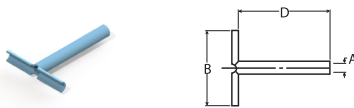
Most often used for longer-term ventilation, the flexible flanges permit insertion through a smaller incision, stable positioning in the tympanic membrane, and easy removal.



Code	Feature	Material	Inner Diameter (A)	Inner Flange Diameter (B)	Outer Flange Diameter (C)	Inner Flange Distance (D)	Total Length (E)
VT-0400-01	--	Silicone	1.14	9.8	-	12.0	-
VT-0401-01	--	Silicone	1.14	7.9	-	4.8	-
VT-0406-01	--	Silicone	1.14	4.1	-	4.8	-
VT-0407-01	--	Silicone	1.14	5.6	-	8.0	-

T-Tube Supersoft

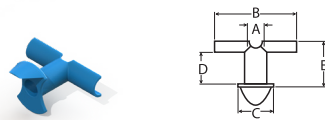
Most often used for longer-term ventilation, the flexible flanges permit insertion through a smaller incision, stable positioning in the tympanic membrane, and easy removal.



Code	Feature	Material	Inner Diameter (A)	Inner Flange Diameter (B)	Outer Flange Diameter (C)	Inner Flange Distance (D)	Total Length (E)
VT-0409-01	--	Silicone	1.14	9.8	-	12.0	-
VT-0410-01	--	Silicone	1.14	5.6	-	8.0	-

Grommet T-Tube

Retaining the advantages of the conventional T-tubes, this larger-lumen design adds a butterfly-shaped grommet with integral tab for ease of insertion and removal.



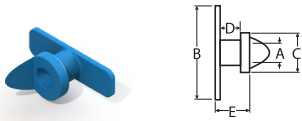
Code	Feature	Material	Inner Diameter (A)	Inner Flange Diameter (B)	Outer Flange Diameter (C)	Inner Flange Distance (D)	Total Length (E)
VT-0403-01	--	Silicone	1.27	6.4	3.8	2.4	3.5

Summit Medical™

Ventilation Tubes

Touma T-Tube

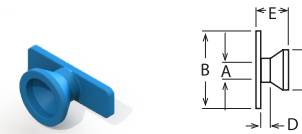
This compact length, longer-term design features flat T-type inner flanges and an outer grommet with integral tab for ease of insertion and removal.



Code	Feature	Material	Inner Diameter (A)	Inner Flange Diameter (B)	Outer Flange Diameter (C)	Inner Flange Distance (D)	Total Length (E)
VT-0405-01	--	Silicone	1.14	5.8	2.4	1.3	2.1

Touma II T-Tube

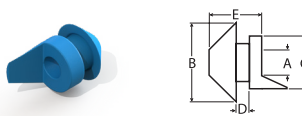
This compact length, longer-term design features flat T-type inner flanges and an outer grommet with integral tab for ease of insertion and removal.



Code	Feature	Material	Inner Diameter (A)	Inner Flange Diameter (B)	Outer Flange Diameter (C)	Inner Flange Distance (D)	Total Length (E)
VT-0408-01	--	Silicone	1.12	5.0	2.59	0.63	2.08

Umbrella

Available in one lumen and flange size (Types I), the inner flange collapses during insertion through a smaller incision and inverts for convenient removal.



Code	Feature	Material	Inner Diameter (A)	Inner Flange Diameter (B)	Outer Flange Diameter (C)	Inner Flange Distance (D)	Total Length (E)
VT-0700-01	Type I	Silicone	1.00	2.3	2.3	0.8	3.2