



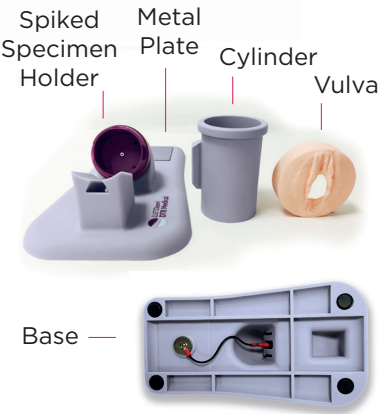


SYMBOL REFERENCE TABLE	
	Consult Instructions for Use
QTY	Quantity
REF	Catalogue number
LOT	Lot number/Batch code
EC REP	Authorized Representative in the European Community / European Union
	Do not use if packaging is damaged and consult instructions for use
UDI	Unique Device Identifier
	Distributor
	Manufacturer



LLETZLEARN® TRAINING SIMULATOR
Instructions for Use

REF LTZ011



DTR Medical® | AN INNOVIA MEDICAL COMPANY
DTR Medical Ltd.,
17 Clarion Court,
Enterprise Park,
Swansea, SA6 8RF, UK
T: +44(0) 1792 797910
www.dtrmedical.com

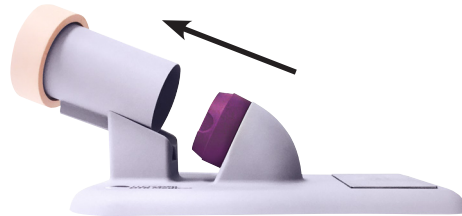
CE
EC REP
Emergo Europe
Westervoortsedijk 60
6827 AT Arnhem
The Netherlands

summit | AN INNOVIA MEDICAL COMPANY
Summit Medical LLC
815 Vikings Parkway, Suite 100
St. Paul, MN 55121 | USA
P: 1-888-229-2875 | +1 651-789-3939
F: 1-888-229-1941 | +1 651-789-3979
www.summitmedicalusa.com

PREPARATION OF THE LLETZLEARN® TRAINING SIMULATOR AND SAMPLE



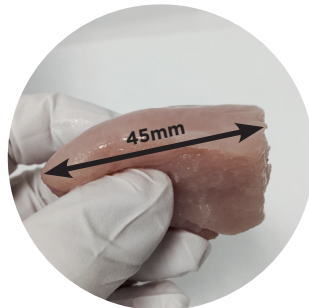
- 1 The LLETZlearn® Training Simulator is delivered assembled for use.



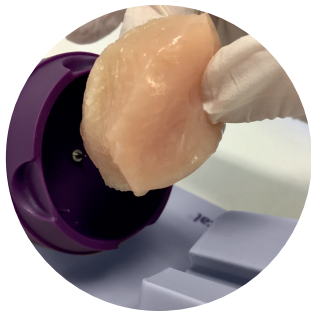
- 2 Remove the cylinder.



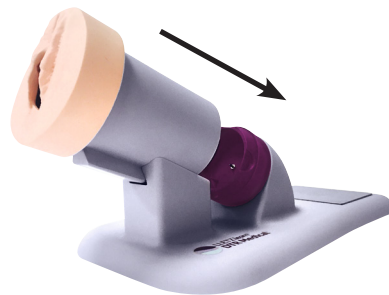
- 3 Reveal the spiked specimen holder.



- 4 Cut a sample to 45mm diameter.



- 5 Place the sample onto the spiked specimen holder.



- 6 Replace the cylinder by following the dove tail groove to slot.

PREPARATION FOR THE PROCEDURE

1. Insert and secure a treatment speculum into the vagina model opening.
2. Attach a suction tube to the smoke outlet pipe on the speculum.
3. Set up and align a colposcope to obtain an optimum view of the sample.
4. Connect a patient return electrode pad onto the stainless metal plate and attach the long cable to an electrosurgical machine (see Appendix 1).
5. Attach a pencil cable connector to the electrosurgical machine.
6. Assemble the sterile electrically charged diathermy loop to the head of the hand-held pencil, using a small, medium or large loop. *Hold this instrument as you would a writing pencil ensuring it remains sterile. **Do not** touch the loop.*
7. Switch on the power to the electrosurgical machine, to send power to the diathermy loop and electrode pad. If the contact between the electrode pad and the specimen is correct the indicator light on the electrosurgical machine will switch to **green**.
8. Switch on the power to the colposcope. Focus the lens as required.
9. Set the power output on the electrosurgical machine to the following settings:
Medium Loop Cut: 50 – 60
Coagulation: 50 – 60 for specimen
***NOTE:** These settings are ONLY to be used when working on a specimen*
10. Switch on the smoke evacuation suction system.

AFTERCARE

1. Turn off external power supplies.
2. Remove all attached equipment used in steps 5-10.
3. Unattach the cable connector.
4. Detach the cylinder and clean down specimen holder with an alcohol wipe.

If the Simulator shows any evidence of damage, please do not use and return to supplier.

APPENDIX 1.

How to attach the patient return electrode pad onto the stainless metal plate – adult or paediatric type

Paediatric Type:

The advantage of using a paediatric pad is that it is smaller, fits easily onto the plate – and does not need to be folded.

Adult Type:

1. Peel back the white paper backing two thirds to expose the sticky surface (image 1).
2. Fold the sticky pad ensuring the pad covers the blue safety strip and extends beyond the blue strip and press it down in order that it is folded flat (image 2).
3. Remove the white paper from the remaining one third of the pad and adhere this section to the stainless metal plate on the simulator.
4. Attach the long cable to an electrosurgical machine.

